

# Christchurch Society of Woodturners

## e - newsletter

## July 2022

### Newsletter Distribution

During COVID newsletters were distributed to all contacts either by Richard Slee or me. As normal club activity has resumed and a definitive list of members is now available, future newsletters will be sent to members only. This is mainly to avoid imposing unwanted emails on ex-members. The newsletter will continue to be published on the club website on or soon after the first Thursday of the month, giving everyone the chance to keep up to date if they so wish.

### CSW Out and About

Mudford Arts Festival - Saturday 30th / Sunday 31<sup>st</sup> July

Ellingham Show- Saturday 13<sup>th</sup> August

The club will be demonstrating and exhibiting at these events – both are a very good day out – even better, come and help for half a day. Please see Paul or Andy if you can help.

### June Meeting

Thanks to Paul for his bird box special – who knew that so much shaping, drilling, hollowing, carving and scorching could go into what sounded like a straight-forward project. 'Adding value' is ringing in my ears from a previous demonstration. Rick has produced a comprehensive technical summary on the website which also gives a link to RSPB guidance on dimensions, finishes etc (thanks Vic). The best way to repay Paul for his demonstrating efforts is to produce a bird box yourself and enter it for the competition at the next meeting – hoping for a bumper entry! Paul has already refined his demo piece, pictured right, to enter the competition.



## Display / Appraisal Table

Thanks to the varied and skilful contributors at the last meeting – it's always fascinating to see how people's imaginations run with items and ideas they have come across or techniques they wish to try.



Mick Boxall



Vic Russell



Joe Van Wyk

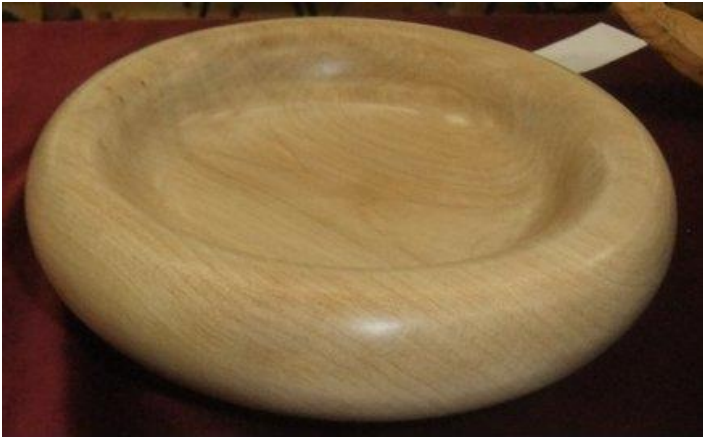


Alan Brooks



David Game





Bill Gibson



Ian McClure



Ian Wright



Paul Reeves



Richard Colenutt



Paul Reeves



## Internet

Vic's browsing selection for this month:

Could this be your next chuck?

<https://www.beaufortink.co.uk/toolpost-versachuck-wood-lathe-chucks>

Wood turner Bernhard Nepelius

<https://bernhard.nepelius.at/en/>

The Sharpening handbook.

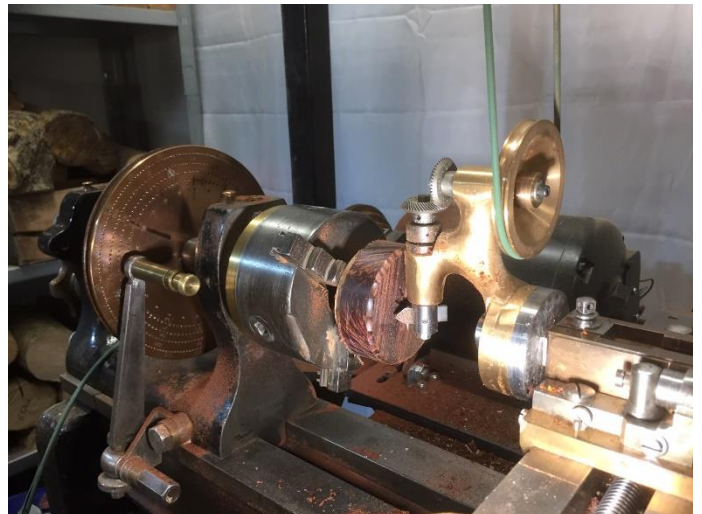
<https://www.sharpeninghandbook.info>

Holland Bowl Mill

<https://youtu.be/uqwmrKmhnf4>

## From the Editor's Workshop

After two unwanted little red lines appeared (and two unwanted days of feeling rubbish), being able to isolate in the workshop seemed like a bonus. I set about making a canteen flask which I chose to decorate using the ornamental lathe. An 8x8x3" block needed to be turned on different axes with different holds involving a test of nerve whilst turning a wood / air combination, the technical challenge of a neat neck and base, patient hollowing, before final shaping, detailing and sanding etc. The rosewood and box inserts and stopper were made on the ornamental lathe. You can see one of the patterns being cut with a rotating cutter, driven by an overhead pulley whilst the headstock is indexed round for each cut. The body of the flask was wax-polished, and the inserts and stopper just sealed. The flask is a great challenge for the adventurous – have a go!





## Taking Photos (VR)

The most important aspect of photography is not the camera or the composition but the light. Any camera records the light reflected from the item we want to preserve. Although I have a perfectly good camera, for convenience I take many of my pictures on an iPad with either an 8mp or 12mp sensor. Most tablets and phones can take very respectable photos with a little care. I take most of my “product” photos out on the garden table. You can take pictures in bright sunlight but it’s easy to lose detail in the shadows and the highlights. As a result of this I normally wait for an overcast period of the day which provides nice flat even lighting. Luckily in the UK we get a lot of overcast days! Probably the next most important aspect is the background, anything too busy can be very distracting so I try to use something plain behind the subject. Anything will do, a piece of fabric or even part of a cardboard box will do. I take all my pictures in landscape mode and crop them afterwards. Take two or three pictures at slightly different angles keeping an eye on the background so you don’t include any unwanted objects. Most phones and tablets will have an app on them for editing so you can adjust the exposure etc and crop the picture to suit afterwards.

Hold the phone or tablet in landscape mode with the lens uppermost to prevent images appearing upside down or sideways on websites and other devices. Happy snapping!



## Wood Finish Chart

Vic has put together this very useful chart from data on the Chestnut website, which will serve as a reference for finish selection / combination. I will ask Rick to put the original file on the website so that it can be seen clearly but below is a taster to whet your appetite.

### Wood Finish Compatibility Chart

	Acrylic Lacquer	Acrylic Sanding Sealer (both)	Burnishing Cream	Cellulose Sanding Sealer	Finishing Oil	Food Safe Finish	French Polish	Friction Polish	Hard Wax Oil	Lemon Oil	Melamine Lacquer	Shellac Sanding Sealer	Tung Oil	Acrylic Gloss Lacquer	Acrylic Satin Lacquer	Ebonising Lacquer	Melamine Gloss Lacquer	Liming Wax	Wood Wax 22	Microcrystalline Wax	Cut'n Polish	Woodtamen Stick Wax	Canalux Wax Stick	Microcrystalline Wax Stick	Spirit Stain	Liquid Wax	Pine Stain	Gilt Cream	Iridescent Paint	Buffing Wheel Kit
Acrylic Gloss Lacquer		✓											✓					✓	✓	✓	✓	✓	✓						✓	
Acrylic Satin Lacquer		✓												✓				✓	✓	✓	✓	✓	✓						✓	
Acrylic Sanding Sealer (Aerosol)	✓	✓				✓	✓						✓	✓	✓			✓	✓	✓	✓	✓	✓				✓	✓	✓	
Acrylic Sanding Sealer	✓	✓				✓	✓											✓	✓	✓	✓	✓	✓				✓	✓	✓	
Acrylic Lacquer	✓	✓																✓	✓	✓	✓	✓	✓						✓	
Burnishing Cream							✓											✓	✓	✓	✓	✓	✓							
Cellulose Sanding Sealer	✓	✓				✓	✓			✓			✓	✓	✓	✓	✓	✓	✓	✓	✓	✓	✓		✓		✓	✓	✓	
Cut'n Polish																		✓	✓		✓	✓	✓				✓			
Ebonising Lacquer		✓												✓	✓	✓		✓	✓	✓	✓	✓	✓				✓	✓	✓	
Finishing Oil		✓		✓														✓	✓	✓	✓	✓	✓						✓	
Food Safe Finish					✓														✓	✓	✓	✓	✓							
French Polish		✓				✓												✓	✓											
Friction Polish		✓					✓											✓	✓	✓	✓	✓	✓							
Gilt Cream				✓	✓				✓	✓		✓						✓	✓		✓	✓	✓		✓		✓			
Hard Wax Oil		✓						✓										✓	✓	✓	✓	✓	✓						✓	
Iridescent Paint	✓												✓	✓				✓	✓		✓	✓	✓					✓		
Lemon Oil									✓									✓	✓		✓	✓	✓							
Liming Wax				✓				✓			✓							✓	✓	✓	✓	✓	✓							
Liquid Wax Clear																		✓	✓		✓	✓	✓		✓					
Melamine Lacquer		✓					✓			✓								✓	✓	✓	✓	✓	✓						✓	
Melamine Gloss Lacquer		✓					✓									✓	✓	✓	✓	✓	✓	✓	✓		✓		✓		✓	
Microcrystalline Wax																		✓	✓	✓		✓	✓						✓	
Pine Stain	✓	✓		✓	✓		✓	✓	✓	✓	✓	✓	✓	✓	✓	✓	✓	✓	✓		✓	✓	✓		✓	✓	✓	✓	✓	
Shellac Sanding Sealer						✓	✓										✓	✓	✓		✓	✓	✓					✓		
Spirit Stain	✓	✓		✓	✓		✓	✓	✓	✓	✓	✓	✓	✓	✓	✓	✓	✓	✓	✓	✓	✓	✓	✓	✓	✓	✓	✓	✓	
Tung Oil											✓							✓	✓	✓	✓	✓	✓							
Wood Wax 22																		✓	✓		✓	✓	✓							



## Introducing

Nigel Batten is one of our newer members who was able to make only a little use of club support before lockdown, forcing him to turn to youtube for technical help and encouragement. His willingness to practise and experiment has led to the progress evident in his work showcased below. He particularly enjoyed the latter part of his career in pest control when he was designing and supplying bird control systems across the UK. On retirement he pursued his interest in making things with wood, with turning being part of that broader interest. His wife's abundantly stocked and beautifully tended garden has Nigel's woodwork, in all its forms, in many gaps and corners – thankfully most of the turning is allowed indoors! He has a good selection of woodworking machinery including a Record Power DML 36SH lathe – all acquired through diligent searching on web sales sites or the middle of you know where. He used to run a mobile disco from the back of his Morris 1000 van (it wouldn't fit on his old Lambretta!) but nowadays he prefers family time and exploring Dorset on foot. Visiting a son in Indonesia helps satisfy his love of Chinese food. In line with most turning newcomers, Nigel says that the steepest learning curve encountered has been the mastery of sharpening tools to a good standard – any hints and advice welcome!

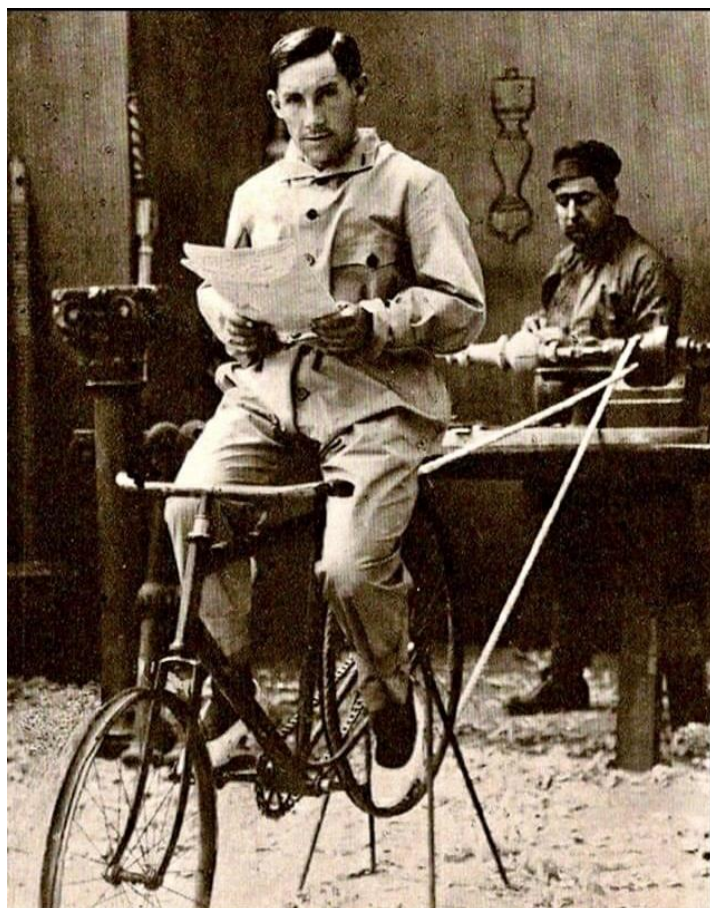




## This Month's Pick of the Pics



And one Nick Jazwinski to look after them!?



Any cyclists in the club up for a demo next year?

## Do You Use Danish Oil?

This American company offers a cautionary note regarding the quality of Danish Oil. Not sure how it relates to the oil available in UK but if you use it regularly it might be worth a read.

<https://www.dapwood.com/danish-oil>

## Just a Thought

If you could travel at the speed of light, would your headlights work?

And what's the speed of dark?

**Contributions** to this e-newsletter are very welcome as are suggestions and comment. I am particularly interested in the story of projects which members have taken on. Please take a couple of photos, scribble down some background notes and I'll put it all together for the newsletter.

Editor: Andy Ogilvie [e-news@christchurchwoodturners.org.uk](mailto:e-news@christchurchwoodturners.org.uk)